



University News



KSU academic programs rank among nation's best

Kennesaw State University has been ranked by several online organizations for having some of the nation's best academic programs. [Read more](#)



KSU launches Office of Intellectual Property Development

The office of Intellectual Property Development, launched as a unit within the [Office of Research](#), acts as a one-stop shop for university researchers looking to advance their discoveries. [Read more](#)



KSU promotes success for first-generation college students

Kennesaw State University recognizes the challenges and obstacles that accompany a first-generation college student. Through programs such as First-Gen Owls, KSU students find the means to succeed. [Read more](#)



KSU awarded NIH grant to enhance biomedical research and diversity

Kennesaw State University has been awarded a three-year, \$809,000 grant from the National Institutes of Health (NIH) to strengthen the University's research and diversity infrastructures in the biomedical fields. [Read more](#)

Alumni News



KSU Alumni Association to launch Southern Polytechnic State University Alumni Society

It's been six years since Southern Polytechnic and Kennesaw State joined forces to create Georgia's second-largest university. In recognition of the history, legacy and traditions that were an integral part of SPSU, the Kennesaw State University Alumni Association has chartered the Southern Polytechnic State University Alumni Society (SPSUAS). [Read more](#)



KSU graduate earns three Telly Awards for videos

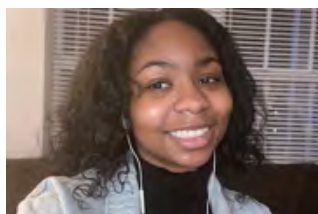
Kennesaw State University graduate, Justin Webb, earns national recognition for his collaborative effort with the Georgia Department of Early Care and Learning on promotional videos. [Read more](#)



KSU graduate books gig as Georgia Symphony Orchestra executive director

Taylor Rambo is a lifelong musician and performer who earned his MBA from the [Michael J. Coles College of Business](#) in Spring 2021. Following his passion for the arts, Rambo was recently named executive director of the Georgia Symphony Orchestra. [Read more](#)

Spotlight on Donors



Scholarship to honor memory of KSU student

Two parents grieving the unexpected loss of their daughter during her sophomore year at Kennesaw State University have partnered with the KSU Foundation to create the Amyah K. Dowdy Memorial Scholarship to honor her memory. [Read more](#)

Spotlight on Students



Summer research experience inspires KSU biochemistry major

Diagnosed with hypertension at a young age, Ami Eho sought to educate herself about cardiometabolic health issues that afflicted her and her family. Now she is immersing herself in research at Kennesaw State this summer, thanks to a fellowship from the National Institutes of Health. [Read more](#)



KSU students work hands-on to augment State Department peacekeeping operations

This spring, Ph.D. students joined [political science](#) professor Charity Butcher in conducting research to help the U.S. Department of State evaluate its peacekeeping operations. [Read more](#)



KSU student finds passion for research, extracurriculars through engineering college

While serving as president of the KSU Motorsports student organization, KSU student, George Williams, has carved out a niche for research in two departments within the [Southern Polytechnic College of Engineering and Engineering Technology](#), co-authoring numerous journal papers and conference presentations. [Read more](#)

Faculty in the News



KSU professor seeks answers in brain and behavior science research

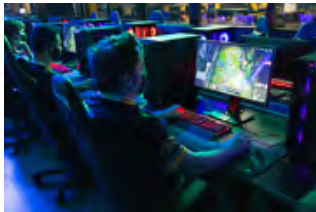
Ebony Glover, an associate professor of neuroscience in KSU's Department of Psychological Sciences, has followed the path from her undergrad courses in the brain and behavior through a nearly 20-year research career in behavioral neuroscience. [Read more](#)



KSU professor uses platform to encourage women in STEM

Equipped with decades of research experiences, KSU professor Paola Spoletini, now plays an active role in encouraging other women to participate in STEM research. [Read more](#)

KSU Athletics



KSU ushers in new era of competition with varsity Esports

KSU student, Derek Comella, is one of the first students to earn a scholarship through KSU's new varsity Esports program. [Read more](#)



Legendary baseball coach, Mike Sansing, Retires after 30 years at KSU

In the 38 years of the Kennesaw State baseball program's existence, head coach [Mike Sansing](#) was at the helm for 30 of them. With the acclaimed coach announcing his retirement, Sansing ends a unique and unforgettable run of achievements that spans five different decades. [Read more](#)

Upcoming Events

SAVE THE DATE:

- MOAS Launch Meeting – July 22 at 7 p.m. Click [HERE](#) to register!
- Rumcation Scrappy Hour – July 23 at 7:30 p.m.

HIT ONE TO THE GAP, TAKE HOME A CAP!

TICKETS ON SALE NOW!



FOR KSU NIGHT AT THE BRAVES!

AUGUST 10, 2021

TRUIST PARK – HANK AARON TERRACE

PRE-GAME: 5:00 – 7:00 P.M.
FIRST PITCH: 7:20 P.M.

PRE-GAME GIVEAWAYS AND DRAWING,
MEET-AND-GREET WITH MILTON OVERTON,
KSU ATHLETIC DIRECTOR

GET TICKETS



A PORTION OF TICKET SALES WILL
SUPPORT THE GAP SCHOLARSHIP FUND,
WHICH PROVIDES HARD-WORKING
STUDENTS THE OPPORTUNITY TO
COMPLETE THEIR DEGREES.

Class Notes

Catch up with your fellow KSU alums by checking out our Class Notes! If you or someone you know want to be featured in an upcoming issue of Class Notes, submit your information through the "Alumni and Friends Update Information" tab below!

[Read Class Notes](#)

[Alumni & Friends Information Update Form](#)



Graduate Degrees That Deliver

Fuel your passion for growth at Kennesaw State University. We have top-ranked graduate certificates, master's and doctoral programs across multiple fields to help take you further and reach your potential.

With flexible classroom settings, multiple campus locations and 100% online offerings, it's easier than ever to advance your career.

[APPLY HERE](#)



TALON T W E N T Y

As the fiscal year comes to a close, we are asking Owl Nation to come together to participate in giving this year. *U.S. News & World Report* uses alumni giving participation as a measure in their annual rankings of colleges and universities. The value of each Kennesaw State University degree is enhanced when we move higher in the rankings through alumni giving.

Each graduate has an opportunity to play a role by making a \$20 gift to KSU to aid in our effort to ascend the rankings. Gifts to KSU also support vital programs and services for our students, and help attract and retain highly talented faculty. Together, our collective giving will help KSU increase our visibility and enhance the student experience.

Please make your \$20 gift today!

[Give Now](#)



[Privacy Policy](#) | [Unsubscribe](#)

[Kennesaw State University](#)

1000 Chastain Rd NW Kennesaw, GA 30144-5588